

Learn about Fukushima's progress since the nuclear disaster, and think together with us about living in harmony with the environment.

Imagine a future only Fukushima can make possible.

What future Fukushima?



COMMUTAN FUKUSHIMA is a facility where visitors can enjoy learning about the current state of Fukushima, radiation, and other environmental issues through hands-on exhibits and a spherical theatre. Our aim is to provide an opportunity to address everyone's concerns, to deepen awareness of the recovery and recreation of Fukushima's environment, and to think about, to create, and to communicate the future of Fukushima from different perspectives.

Hours

Hours / 9:00am to 5:00pm
 Closed / Mondays or the following weekday
 (if Monday is a national holiday)
 December 29th-January 3rd

Rental Rooms



Meeting Room
 (approx. 100 people)



Lecture Hall
 (approx. 194 seats)



Multi-purpose Room
 (approx. 70 People)

For more information on fees and applications, please visit our website.

Access

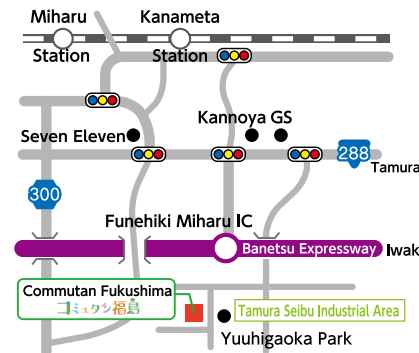
By Car

Turn left on the Banetsu Expressway Funehiki Interchange Exit, continue on the Route 288 Miharu Bypass, then turn left at the Tamura Seibu Industrial Area Entrance Traffic Signal.

By Train

Take the Miharu Town Bus from Miharu Station on the JR Banetsu East Line.

ACCESS MAP



Free Miharu Town Bus (Miharu-no-Sato Course)

※Free round trip for those who use the Miharu Town Bus to Visit COMMUTAN FUKUSHIMA.

The bus schedule can be found on the website below.

Scan to visit our website



Centre for Environmental Creation Communication Building
COMMUTAN FUKUSHIMA

<https://com-fukushima.jp> COMMUTAN FUKUSHIMA search

10-2 Fukasaku, Miharu, Tamura County, Fukushima Prefecture 963-7700

TEL.0247-61-5721 FAX.0247-61-5727



Get to know Fukushima today, learn about radiation, and envision the future.

コミュニティ福島

COMMUTAN FUKUSHIMA

Free Admission

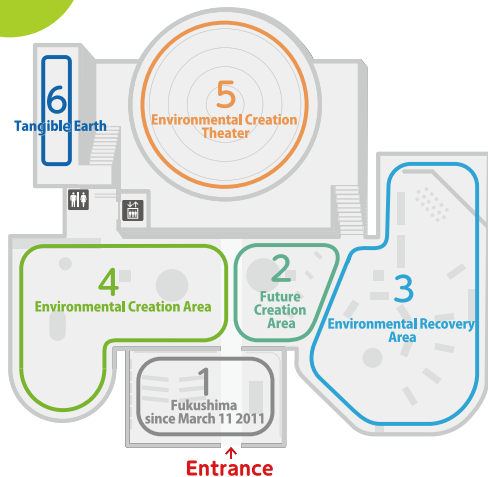
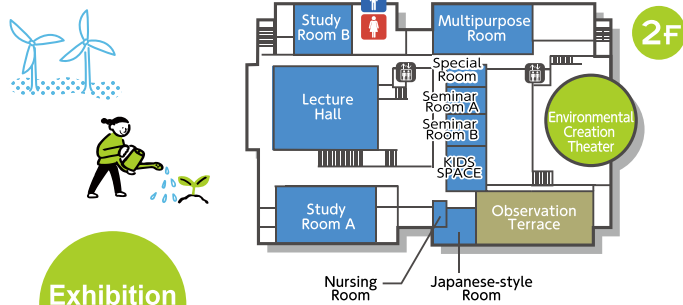
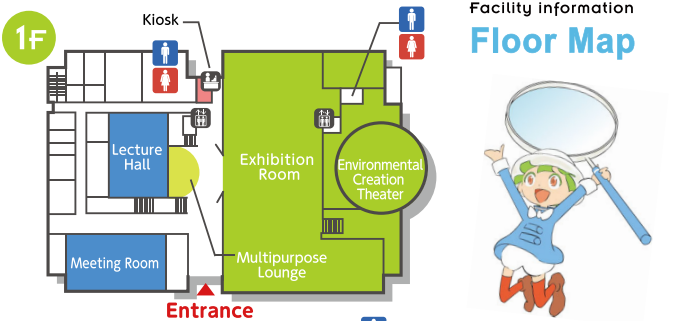


Centre for Environmental Creation Communication Building
COMMUTAN FUKUSHIMA



Commutan Fukushima:

A space for dialogue and collaboration, where we can work together to create a better future for Fukushima.



1 Fukushima since March 11, 2011

Footsteps Toward the Revitalization of Fukushima!

On March 11th, 2011, at 2:46pm, a massive earthquake and tsunami caused a nuclear disaster, and Fukushima's battle against it began. We look back at the records and memories of the disaster.



2 Future Creation Area

Learn about Fukushima Today, and envision the future together!

The impact of the nuclear disaster and various other environmental problems have been threatening the Earth. What kind of future does Fukushima envision to overcome these problems? Let's discuss it here.



3 Environmental Recovery Area

Learn about radiation and the research at the Centre for Environmental Creation!

The road to complete recovery from environmental contamination is still some way off. In this area, visitors can learn about radiation so they can make informed choices. They can also learn about the research that is being done at the centre.



4 Environmental Creation Area

Learn about the environment, and new energy alternatives to nuclear power!

Moving towards a Fukushima without nuclear power, and a society that lives in harmony with nature while using renewable energy. Experience a sustainable lifestyle in this area.



6 Tangible Earth

Experience a real-time view of the Earth from space with an interactive globe.

Look at the current issues facing our society and environment today, the current situation surrounding the Earth, and think about the future while interacting with the globe.



5 Environmental Creation Theater

Powerful visuals and sound! A full spherical dome theater

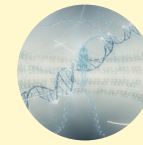
A 360° omnidirectional theater with powerful video and sound. Visitors can have the unique experience of feeling as if they're floating as they contemplate the future of Fukushima's environment.



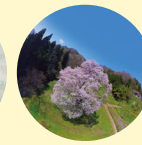
Daily Screenings

Commutan Fukushima's Original Movies

Weekends/Holidays



Radiation



The Renaissance of Fukushima



Connecting to the Future: The Environment of Fukushima



Earth's Environment as Seen from Space

Weekend/Holiday Screenings

Original Programmes Courtesy of The National Museum of Nature and Science

Watch programmes from The National Museum of Nature and Science's "Theater 360." Two films are screened each month from a selection of **eight**.



A The Last Dinosaurs
-Tale of the Fossils-



B Mantle Dynamics and Evolution of the Earth
-Earth's Amazing Interior-



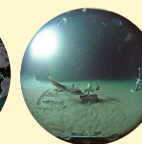
C The Universe: A Journey of 13.8 Billion Years
-Everything Comes from the Stars-



D The Ocean Food Chain
-The Flow of Energy from the Sun to the Bluefin Tuna Fish-



E The Journey of Humans
-The Worldwide Dispersal and Creativity of Homo-sapiens-



F Deep Sea
-Submersible sheds light on the dark frontier-



G 30,000 year-old Epic Voyage
-Homo-sapiens arrive in Japan-



H Rivers of Japan
-Pathways for Discovering Endemic Species-

Screening Schedule

January	February	March	April	May	June
D F	A C	B G	D E	A F	C H
July	August	September	October	November	December
D G	A F	B H	C E	B G	E H

*Screenings are held on Saturdays, Sundays, national holidays, and during the semester breaks.